

NW 1/4  
SECTION 29, T.6N., R.2W., S.L.B. & M.

TAXING UNIT: 53

IN WEBER COUNTY

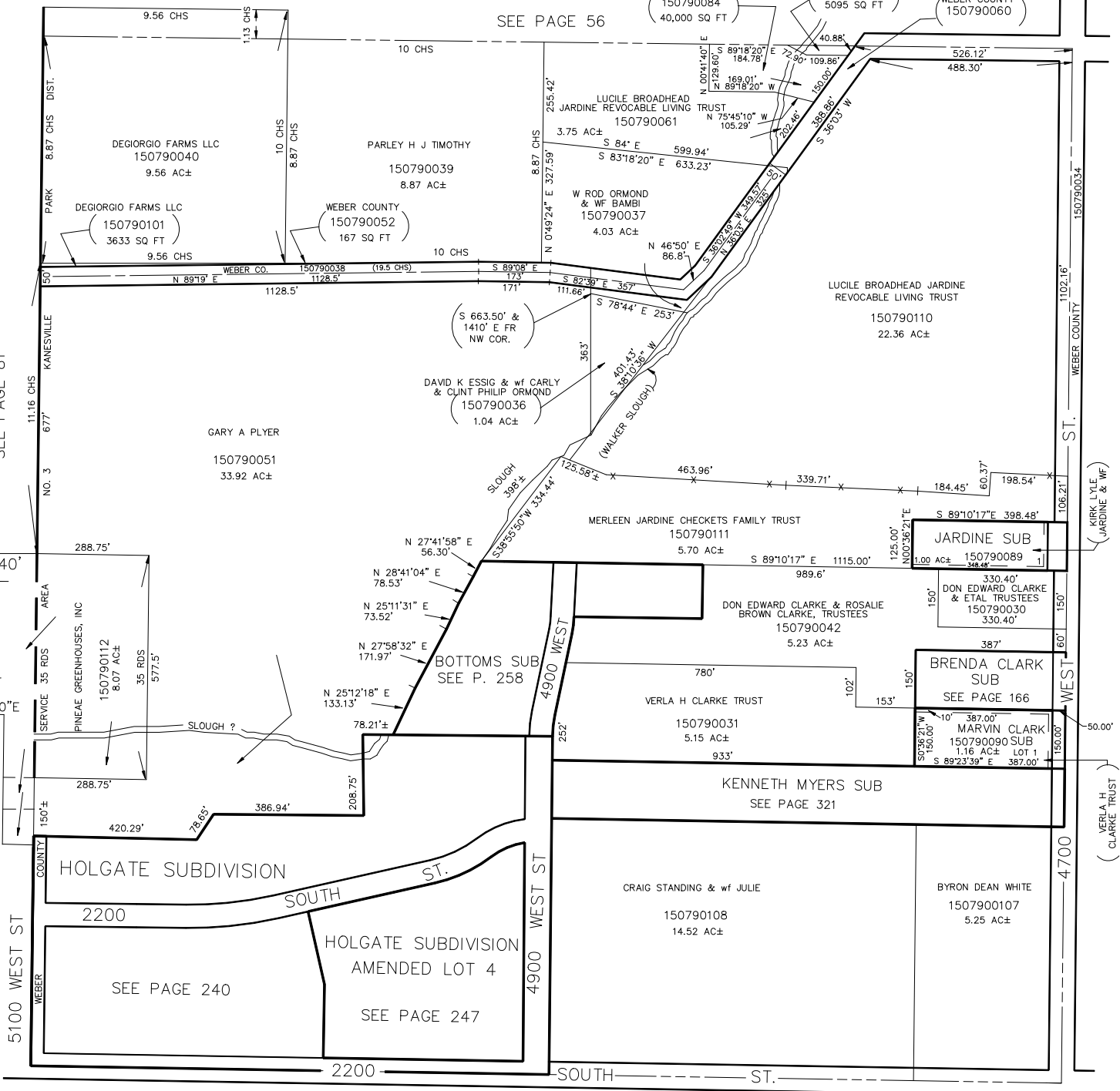
SCALE 1" = 200'

SEE PAGE 56

WAYNE C JARDINE  
150790084  
40,000 SQ FT

WAYNE C JARDINE  
150790085  
5095 SQ FT

WEBER COUNTY  
150790060



SEE PAGE 81

SEE PAGE 81

SEE PAGE 79-2